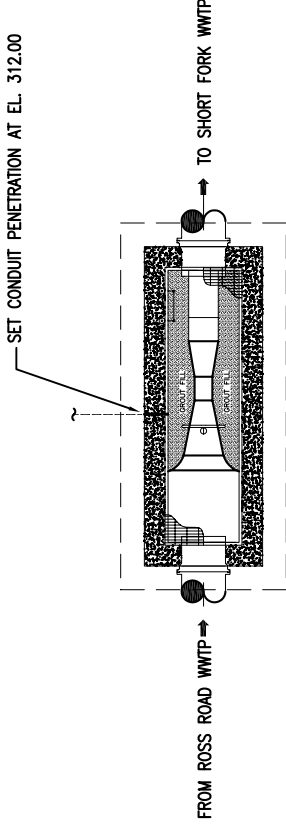
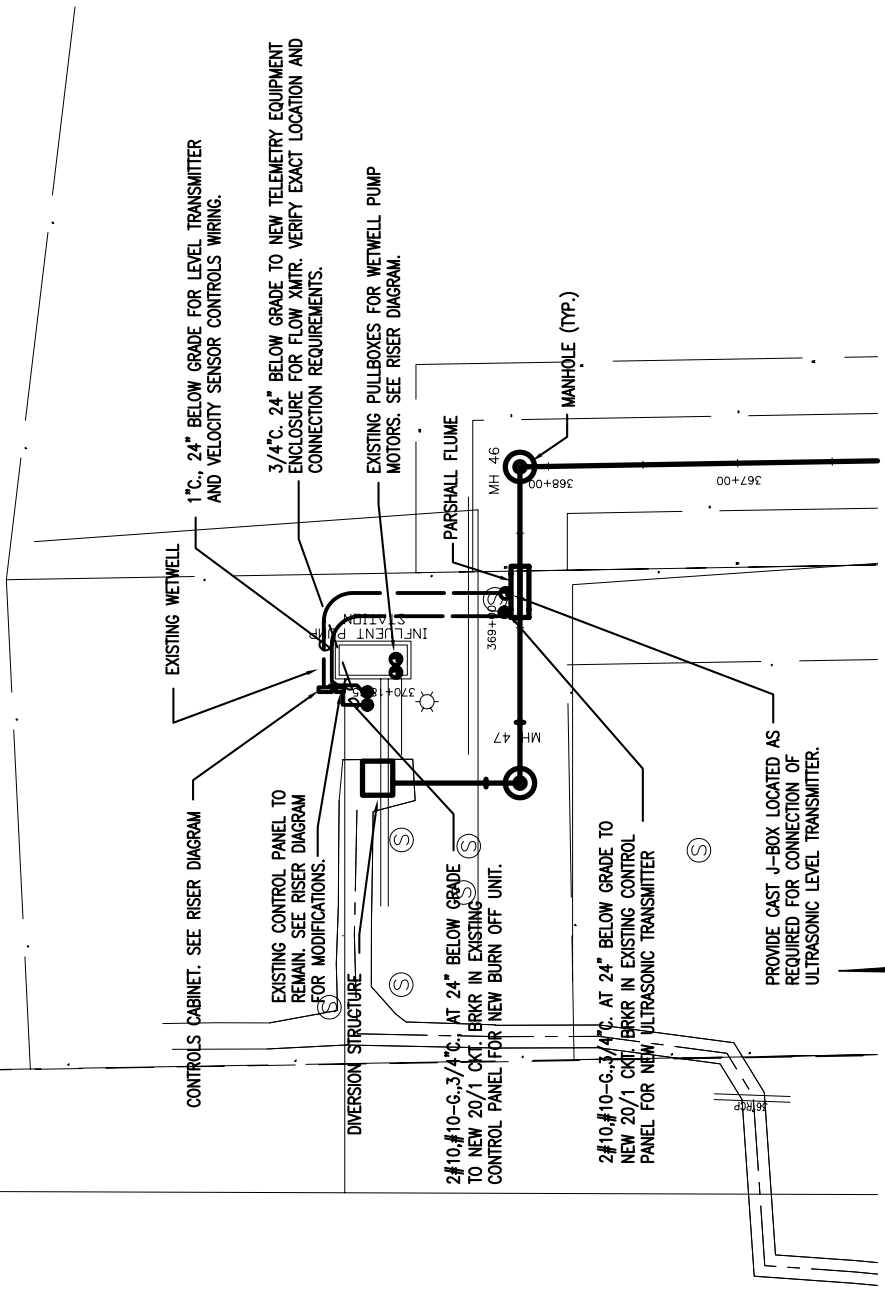


METERING STATION SECTION

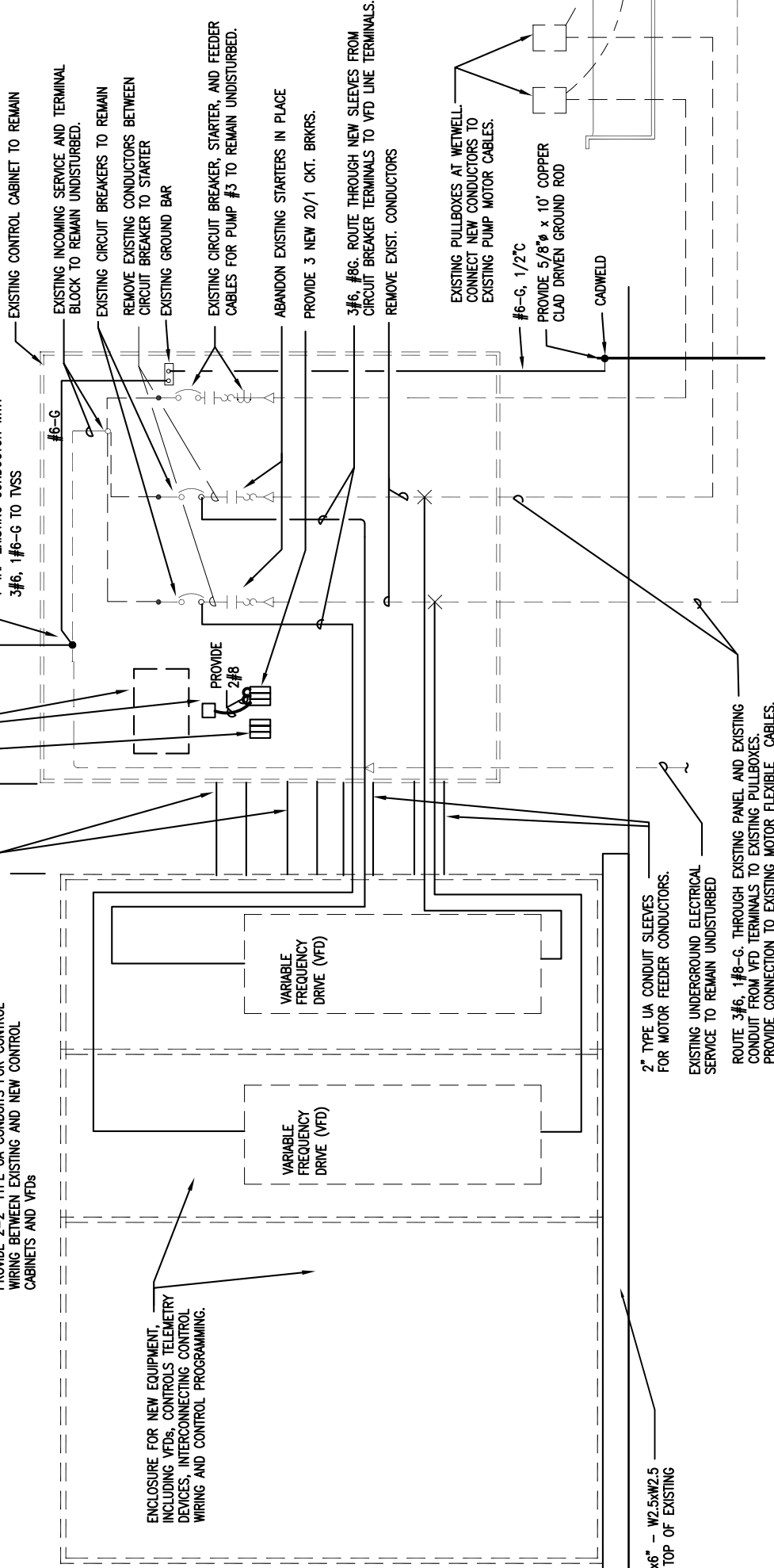


METERING STATION PLAN

1 ROSS ROAD METERING STATION  
SCALE: 1/8" = 1'-0"



2 ELECTRICAL-SITE PLAN  
SCALE: 1" = 50' KETPLAN



ENCLOSURE FOR NEW EQUIPMENT INCLUDING VFDs, CONTROLS TELEMETRY DEVICES, INTERCONNECTING CONTROL WIRING AND CONTROL PROGRAMMING.

PROVIDE 2-2" TYPE UA CONDUITS FOR CONTROL WIRING BETWEEN EXISTING AND NEW CONTROL CABINETS AND VFDs

2" TYPE UA CONDUIT SLEEVES FOR MOTOR FEEDER CONDUCTORS. EXISTING UNDERGROUND ELECTRICAL SERVICE TO REMAIN UNDISTURBED

ROUTE 3#6, 1#6-G THROUGH EXISTING PANEL AND EXISTING CONDUIT FROM VFD TERMINALS TO EXISTING PULLBOXES. PROVIDE CONNECTION TO EXISTING FLEXIBLE CABLES.

DIV. 17 TO PROVIDE DIMENSIONS AND ANCHORING REQUIREMENTS FOR CONCRETE PAD TO DIV. 3

6" THICK CONCRETE PAD WITH 6"x6" - W2.5xW2.5 REINFORCEMENT; SET LEVEL WITH TOP OF EXISTING WET WELL.

- GENERAL NOTES
1. PROVIDE PVC COATED RIGID STEEL CONDUIT WITH PVC COATED FITTINGS FOR THE WORK.
  2. PROVIDE COPPER CONDUCTORS WITH TYPE THHW/XHHW INSULATION, #12 MINIMUM FOR POWER WIRING.

ELECTRICAL LEGEND

- | SYMBOL | DESCRIPTION                                  |
|--------|--|
| ●      | CONNECTION TO EQUIPMENT AS REQUIRED. VERIFY. |
| ---    | WIRING AND/OR CONDUIT RUN 24" BELOW GRADE.   |
| ●      | CAST J-BOX, SIZE AS REQUIRED.                |

3 ELECTRICAL RISER DIAGRAM  
SCALE: NONE

NO.	DATE	BY	APP'D	NATURE	REVISIONS



100% SET

DESOTO COUNTY REGIONAL UTILITY AUTHORITY  
UPPER CAMP CREEK INTERCEPTOR NORTH  
DESOTO COUNTY, MISSISSIPPI



ELECTRICAL DETAILS

PROJECT NO.	16535.05
CONTRACT	1
SHEET	E1.01